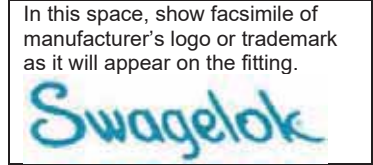




STATUTORY DECLARATION
Registration of Fittings

I, Joel Feldman, Vice President, Engineering
(name of applicant) (position title) (must be in a position of authority)
of Swagelok Company
(name of manufacturer)



located at 29500 Solon Road, Solon, Ohio 44139 USA (see Attachment A)
(plant address)

do solemnly declare that the fittings listed hereunder, which are subject to the Safety Codes Act
(check one)

[X] comply with the requirements of ASME B31.3 which specifies the dimensions,
(title of recognized North American Standard)

materials of construction, pressure/temperature ratings and identification marking of the fittings, or

[ ] are not covered by the provisions of a recognized North American standard and are therefore manufactured
to comply with as supported by the attached
(title of code of construction or other applicable document)

data which identifies the dimensions, materials of construction, pressure/temperature ratings and the basis
for such ratings, and the marking of the fittings for identification.

I further declare that the manufacture of these fittings is controlled by a quality control program which has been
verified by the following authority, BSI as being suitable for the manufacture of
these fittings to the stated standard. The fittings covered by this declaration, for which I seek registration, are

Category A Type Fittings
(brief description of fittings)

In support of this application, the following information, calculations and/or test data are attached:

ISO 9001:2015 Certificate, Attachment A, Attachment B, Catalog Information and other Support Documents

DECLARED before me at in the of
(city) (province or state)

this day of ,
(Month) (Year)

(print) Unable to get a notary signature
(a Commissioner of Oaths or Notary Public)

(sign) or seal due to COVID-19 situatio
(a Commissioner of Oaths or Notary Public)

DocuSigned by:
[Signature]
4/26/2021 | 7:44 AM EDT
C87CBBFFD3F14B7...

For ABSA Office Use Only: \*\* The fitting rating is based on the lower rating between the type and end connections.

NOTES: \*\* The CRN Code Compliance Summary document lists the rating for each size and type of end
connection

To the best of my knowledge and belief, the application meets the requirements of the Safety Codes Act and CSA
Standard B51, Clause 4.2, and is accepted for registration in Category

Registration Number:
(Signature of the Administrator/SCO)

Date Registered: Expiry Date:
Date: 2021-06-22 By: [Signature]

The information you provide is necessary only for the administration of the programs as required by the Alberta Safety Codes Act and Regulations in the
Pressure Equipment Discipline.

2021-03141
ABSA
SAFETY CODES ACT - PROVINCE OF ALBERTA
ACCEPTED: 0A23299.52
See acceptance letter for
conditions of registration.
Date: 2021-06-22 By: [Signature]
This stamp and signature have been affixed electronically
to this registered design as required by Section 20(1) of
the Pressure Equipment Safety Regulation, in accordance
with the Electronic Transactions Act.



THIS IS PART OF CRN

0A23299.5

Technical Standards and Safety Authority

Canadian Registration Number Submittal #SS-MP\_FTNG-2021-021 and Pressure Vessels Safety Program Date: April 21, 2021 Page 1 of 4

### Attachment B. Scope of Registration for Swagelok Stainless Steel Medium Pressure Tube Fittings (Category A)

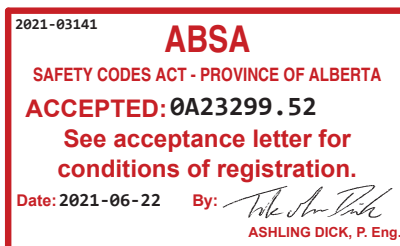
This document represents the scope of Swagelok 316 Stainless Steel Medium Pressure Tube Fittings covered by this submission for CRN approval. These Swagelok Medium Pressure Tube Fittings have been evaluated in accordance with ASME B31.3 for unlisted components.

#### Summary Table

Product Description or Series	Material (Standard)	Port Connections and Sizes	Maximum Allowable Working Pressure		Design Code of Construction
			Up to 100°F (psig)	At maximum temperature per ASME B31.3 (psig)	
Medium Pressure Tube Fittings and Adapter Fittings	316 SS (ASTM A479) straight fittings, shaped fittings, hardware	Medium Pressure Tube Fitting FK 1/4 – 1 inch, 6mm, 10mm, 12mm	15 000 - 6250*	12 540 –4781 @1000°F*	Unlisted Component in ASME B31.3
		Medium Pressure Tube Adapter FK-TA 1/4 – 1 inch 6mm, 10mm, 12mm	15 000 - 6250	12 540 - 5225 @1000°F	
		NPT Male and Female, Medium Pressure Design 1/16 - 1 inch	15 000 - 10 000	12 540 – 8360 @1000°F	
		UN/UNF(SAE) Heavy Duty STH Male Non-Positionable Stud 1/4 inch, 3/8 inch	9137**	9137 @400°F**	
		Cone & Thread MP, Male and Female 1/4 – 1 inch	15 000	12 540 @1000°F	
		Cone & Thread Tube Nipple CW 1/4 – 1 inch	15 000	12 540 @1000°F	

\* Medium Pressure Tube Fitting (FK) pressure rating is tubing dependent

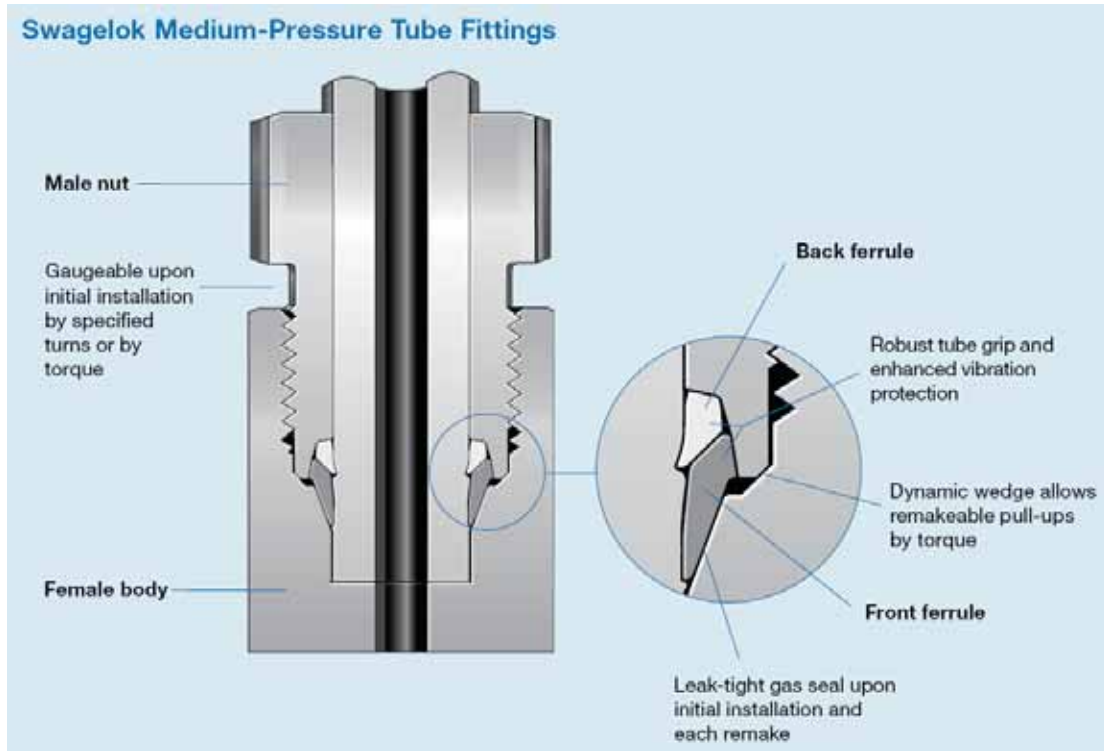
\*\* SAE Heavy Duty (STH) pressure rating is O-Ring dependent



This stamp and signature have been affixed electronically to this registered design as required by Section 20(1) of the Pressure Equipment Safety Regulation, in accordance with the Electronic Transactions Act.

## Product Description

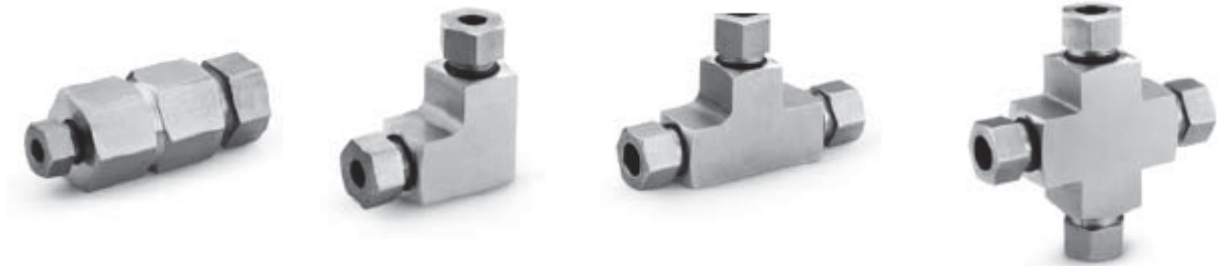
Swagelok Medium Pressure Tube Fittings are furnished in a variety of configurations and shapes (straight, elbow, tee or cross). Swagelok Medium Pressure Tube Fittings consist of at least one Swagelok Medium Pressure Tube Fitting or Tube Adapter End, which have two-ferrule mechanical-grip design. The Swagelok medium pressure tube fitting end is a proprietary design, and the assembly consists of a body, nut, front and back ferrule (see detail). The table above, as well as the "Configurations" section, covers a variety of other end connections.



## Configurations

### 1. Unions. (Straight, Elbow, Tee, Cross)

Swagelok Medium Pressure Tube Fitting (FK) End Connections



### 2. Tube Adapter

Swagelok Medium Pressure Tube Fitting (FK) with Medium Pressure Tube Adapter (FK-TA) End Connection

Swagelok Medium Pressure Tube Adapter (FK-TA) to an NPT (Male) End Connection



**THIS IS PART OF CRN**  
**0A23299.5**  
Technical Standards and Safety Authority  
Boilers and Pressure Vessels Safety  
Program

### 3. Male and Female Connectors / Adapters

Swagelok Medium Pressure Tube Fitting (FK) End Connection, adapting to an:

- NPT (Male or Female) End Connection
- SAE Heavy Duty (Male), STH End Connection
- Cone & Thread (Male or Female), MP End Connection
- Cone and Thread Tube Nipple (Male), CW End Connection

*Straight Fittings: 1/4" – 1", 6mm-12mm FK End Connections may adapt to any of the above listed end connections.*

*Shape Fittings: 1/4" – 3/4", 6mm-12mm FK End Connections may adapt to NPT, SAE, or Cone & Thread MP end connections.*



### 4. Caps and Plugs

Swagelok Medium Pressure Tube Fitting



(For dimensions see catalog.)

## **Product Options:**

The product option listed below affect pressure and/or temperature ratings shown in the above Summary Table, but in all cases the ratings are less than, or equal to, those shown in the table.

1. Sealant for tapered pipe threads (NPT):
  - a. Curable resin with PTFE
  - b. PTFE tape

Additional options that do not affect pressure and/or temperature ratings may be made available within the scope of this approval. Examples of these would include the following:

1. Special marking
2. Special cleaning
3. Wire drills
4. Bulkhead Configurations ( $\frac{1}{4}$ " –  $\frac{3}{4}$ ", 6mm-12mm sizes only)
5. Equivalent metric or fractional hex sizes



All the above options, those that affect pressure and/or temperature ratings and those that do not, are within the scope of this approval.

## **Quality System**

The Swagelok Company quality system complies with the requirements of ISO 9001:2015. The Swagelok Company maintains BSI Certificate of Registration Number FM 01729, which applies to all locations listed on the Certificate.

## **References**

The product catalog does not represent the full scope of the registration but rather details some of the most common options.

- Medium- and High-Pressure Fittings, Tubing, Valves, and Accessories MS-02-472, Rev O

**THIS IS PART OF CRN**  
**0A23299.5**  
 Technical Standards and Safety Authority  
 Piping and Pressure Vessels Safety  
 Program

**Attachment A. Swagelok Manufacturing Locations**

This document lists the Swagelok locations where end item or component level manufacturing activities take place.

Swagelok Company 29500 Solon Road Solon, Ohio 44139 USA	Swagelok Company (Falon 1) 348 Bishop Road Highland Heights, Ohio 44143 USA
Swagelok Company (Highland) 318 Bishop Road Highland Heights, Ohio 44143 USA	Swagelok Company (Falon 2) 358 Bishop Road Highland Heights, Ohio 44143 USA
Swagelok Company (OFC) 29495 F.A. Lennon Drive Solon, Ohio 44139 USA	Swagelok Company (HPF) 6050 Cochran Road Solon, Ohio 44139 USA
Swagelok Company (Atlantic) 26651 Curtiss Wright Parkway Willoughby Hills, Ohio 44092 USA	Swagelok Company (Snow Metal) 6060 Cochran Road Solon, Ohio 44139 USA
Swagelok Company (Micro) 26653 Curtiss Wright Parkway Willoughby Hills, Ohio 44092 USA	Swagelok Company (Alfred) 29500 Ambina Drive Solon, Ohio 44139
Swagelok Hose Services Company (SHSC) 29900 Solon Industrial Parkway Solon, Ohio 44139	Swagelok Company (Strongsville) 15400 Foltz Road Strongsville, Ohio 44119
Swagelok (China) Fluid System Technologies Ltd. Changshu Export Process Zone Changshu Economic Development Zone Changshu, Jiangshu 215513 China	Swagelok Limited Ballafletcher Road Tromode IM4 4RA Isle of Man

2021-03141  
**ABSA**  
 SAFETY CODES ACT - PROVINCE OF ALBERTA  
**ACCEPTED: 0A23299.52**  
**See acceptance letter for**  
**conditions of registration.**  
 Date: 2021-06-22 By: *Ashling Dick*  
 ASHLING DICK, P. Eng

This stamp and signature have been affixed electronically to this registered design as required by Section 20(1) of the Pressure Equipment Safety Regulation, in accordance with the Electronic Transactions Act.

June 22, 2021

**Attention:** Tanya Francis  
TECHNICAL STANDARDS & SAFETY AUTHORITY  
345 CARLINGVIEW DRIVE  
TORONTO, ON M9W 6N9

The design submission, tracking number 2021-03141, originally received on June 09, 2021 was surveyed and accepted for registration as follows:

**CRN :** 0A23299.52 **Accepted on:** June 22, 2021  
**Reg Type:** NEW DESIGN **Expiry Date:** June 07, 2031  
**Drawing No. :** ATTACHMENT A & B  
**Fitting type:** 316SS FK SERIES MEDIUM PRESSURE TUBE FITTINGS  
Design registered in the name of : SWAGELOK COMPANY

**The registration is conditional on your compliance with the following notes:**

- \*\* See attachment A and B for manufacturing location, and scope of registration
- \*\* The Scope of this registration include the renewal of 0A14738.5, and the addition of size 3/4" and 1"
- \*\* The fitting rating is based on the lower rating between the type of end connections. The CRN Code Compliance Summary document lists the rating for each size and type of end connection

As indicated on AB-41 Statutory Declaration form and submitted documentation, the code of construction is ASME B31.3.

- It is our understanding that the fitting(s), included as the scope of this submission, that is(are) subject to the Safety Codes Act shall comply with the requirements of the indicated Standard or Code of Construction on the AB-41 Statutory Declaration as supported by the attached data which identifies the dimensions, materials of construction, press./temp. ratings and the basis for such ratings, and the identification marking of the fittings.
- This registration is valid only for fittings fabricated at the location(s) covered by the QC certificate attached to the accepted AB-41 Statutory Declaration form.
- This registration is valid only until the indicated expiry date and only if the Manufacturer maintains a valid quality management system approved by an acceptable third-party agency until that date.
- Should the approval of the quality management system lapse before the expiry date indicated above, this registration shall become void.

An invoice covering survey and registration fees will be forwarded from our Revenue Accounts.

If you have any question don't hesitate to contact me by phone at (780) 433-0281 ext 3337 or fax (780) 437-7787 or e-mail Dick@absa.ca.

Sincerely,



June 22, 2021

DICK, ASHLING, P. Eng.  
DOP Cert. No. D00007936